

# RAISED ON COUNTRY

*Shorthorn Bull & Female Sale*



**FRIDAY - SATURDAY**

**DECEMBER 3 & 4, 2021**



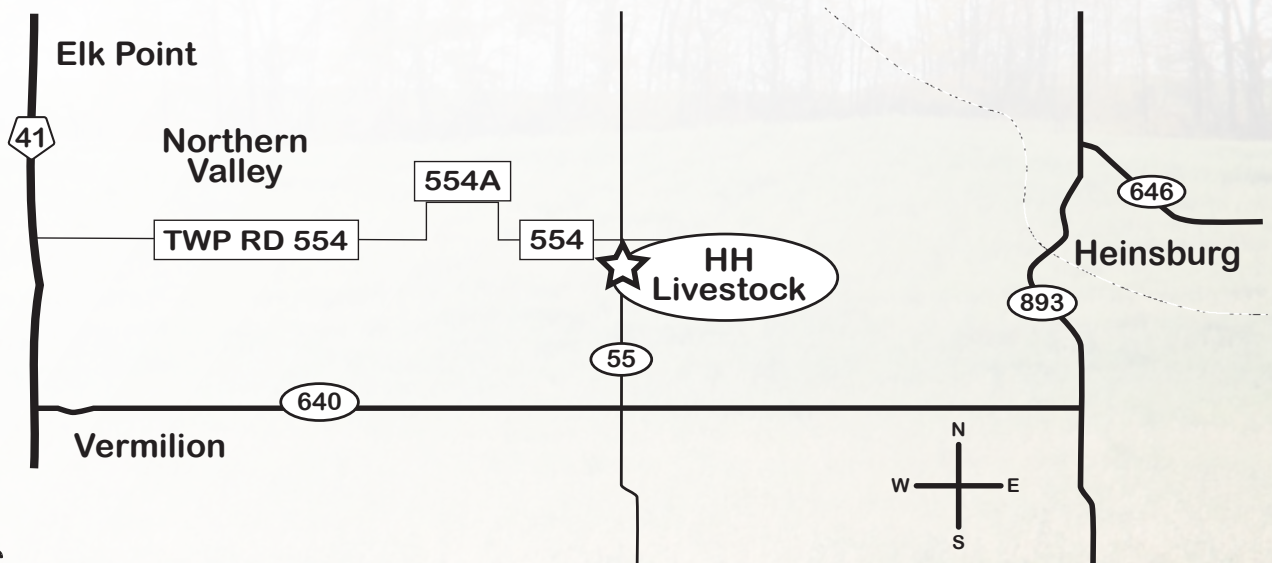
# Welcome

**W**elcome to the 3rd Raised on Country Shorthorn Bull & Female sale. We are proud to offer a great selection of high quality bulls and females.

We pride ourselves on selecting cattle that are structurally sound, functional and have some thickness and dimension. We expect our cows to calve on their own with low birth weights and to have a balanced udder with small teats. As well as being moderately framed and easy fleshing. Our cattle work for us, and as a result our herd requires very low inputs.

We feel that concentrating on the above criteria will allow the HH cattle to perform well in any purebred or commercial cattle operation.

Sincerely,  
Heather Haydock & Family



## Directions

Land Location SE19-55-5-W-4.

Sign at the end of drive 553036 Range Road 55

From Vermilion - Head North on HWY 41. Turn East on HWY 640.

Travel 7 miles to Range Road 55 and head North 1.5 miles. Farm is on the west side of the road.

# RAISED ON COUNTRY

## Shorthorn Bull & Female Sale

**FRIDAY - SATURDAY | DECEMBER 3 & 4, 2021**

**BIDDING OPENS: FRIDAY, DECEMBER 3 @ 9:00 AM**

**BIDDING CLOSES: SATURDAY, DECEMBER 4 @ 6:00 PM**

*VIEWING OF CATTLE: ANY TIME PRIOR TO, OR ON DECEMBER 3 & 4  
FOR INFORMATION ON HOW TO BID: PAGE 13*



**Heather Haydock**

Cell: 780-853-7579

Email: [shorthorn\\_cowgirl@hotmail.com](mailto:shorthorn_cowgirl@hotmail.com)

Address: Box 876 Elk Point AB, T0A 1A0

Website: [hhlivestock.ca](http://hhlivestock.ca)

# REFERENCE SIRES

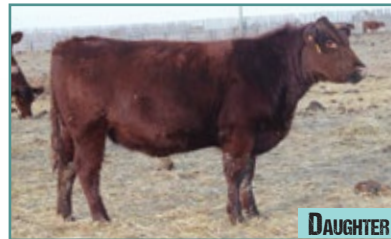
## HH Miner 10D



*23360	POLLED	04/06/2016	RED					
BW	CE	BW	WW	YW	M	TM	CEM	ST
75	EPD 16	-2.0	49	65	28	53	9	12
	% 10	5	40	70	15	20	10	75

GLENFORD MINER 16W  
**S: GLENFORD MINER 68Y**  
 GLENFORD GWENDA 28W  
 YY THE EARL OF DOVER 118U  
**D: YY BARONESS IRENE 215Z**  
 DRC 7116HU

THF & DSF | Myostatin nt419



## HH Adam 8F



*25099	POLLED	03/11/2018	ROAN					
BW	CE	BW	WW	YW	M	TM	CEM	ST
98	EPD 6	3.9	56	87	27	55	3	17
	% 70	75	15	20	25	15	65	35

YY DUKE OF EARL 186Y  
**S: YY ADAM 294A**  
 DRC7119KL  
 YY DOVER JAZZ 156X  
**D: DGL ZENAIDA 35**  
 DG MS CHECK

THF, PHAF & DSF

# 6 & 2 YR OLD BULL



COUNTRYSIDE CONROY 91C

## HH 91C COUNTRYSIDE *Conroy 91C*

M478528 POLLED 02/28/2015 RED

BW	CE	BW	WW	YW	M	TM	CEM	ST
73	23	-4.8	25	45	25	38	13	14
%	1	1	>95	95	40	90	2	60

SASKVALLEY WHOLESALE 114W

S: SASKVALLEY YESTERDAY 116Y

SASKVALLEY ROSE 43W

ALTA CEDAR PRIMO 27T

D: RIVER RIDGE HAPPY 6Y

RIVER RIDGE HAPPY 7T



THF, DSF & PHAF

Heifer bull deluxe! He's not too big for heifers! Throw him out with a group of 30, or throw him out with your top end cow. He'll get the job done either way! Not to mention he's in great shape for his age.

TOP 2% - CEM | TOP 1% - CE & BW

## HH 8H HH *Miner 8H*

\*27848 POLLED 04/02/2020 RED

BW	WW	CE	BW	WW	YW	M	TM	CEM	ST
84	650	14	-0.5	61	90	31	61	8	18
%		10	10	4	10	2	2	15	25

GLENFORD MINER 68Y

S: HH MINER 10D

YY BARONESS IRENE 215Z

MURIDALE BANKS 89B

D: HH BARONESS IRENE 27F

YY BARONESS IRENE 215Z

\$BMI: 151.69 | TOP 1%

Long bodied, deep sided, tremendous muscle shape

and pattern. Big footed, big boned, rugged bull with excellent growth from a calf right up to now. Been a standout since birth. Excellent cow maker!!!

TOP 10% - CE, BW & YW | TOP 4% - WW | TOP 2% - Milk & TM



HH MINER 8H

# 2 YR OLD & BULL CALVES



**HH 37H**

**HH Adam 37H**

\*27832 POLLED 04/27/2020 RED & WHITE

BW	WW	CE	BW	WW	YW	M	TM	CEM	ST	
95	559	EPD 8	3.2	48	76	28	52	7	18	
		%	55	70	40	40	10	15	20	25

YY ADAM 294A

S: HH ADAM 8F

DGL ZENAIDA 35Z

WPS ZAMBESI 571

D: YY ZAMBESI ANNA 149X

DIAMOND MERRY ANNA 4M

Can add milk to your herd! Lots of growth and performance.



**HH 15J**

**HH Conroy 15J**

M484865 POLLED 04/08/2021 ROAN

BW	WW	CE	BW	WW	YW	M	TM	CEM	ST	
90	573	EPD 16	-0.4	40	64	24	44	9	16	
		%	3	10	80	75	45	70	10	45

SASKVALLEY YESTERDAY 116Y

S: COUNTRYSIDE CONROY 91C

RIVER RIDGE HAPPY 6Y

GLENFORD MINER 68Y

D: HH JASMINE 21C

HH JASMINE 64X

My pick of the Conroy calves! He is smooth polled, long bodied and look at the muscular hind quarter! He has loads of eye appeal and commands your attention. He has by far, the best muscle pattern out of all the Conroy calves. His mother is a good milking cow that works hard. She never misses and always brings me home a calf.



**HH 19J**

**HH Miner 19J**

M484870 POLLED 04/09/2021 RED w/ WHITE MARKINGS

BW	WW	CE	BW	WW	YW	M	TM	CEM	ST	
74	563	EPD 20	-3.5	38	55	26	45	12	14	
		%	1	1	90	95	25	65	1	70

GLENFORD MINER 68Y

S: HH MINER 10D

YY BARONESS IRENE 215Z

COUNTRYSIDE CONROY 91C

D: HH MOCHA 4G

HH MOCHA 19B

\$BMI: 137.12 | TOP 4%

A growthy, stylish well muscled calf out of a 1st calf heifer. The Conroy x Miner cross is outstanding.

# BULL CALVES

## HH 23J

### HH Conroy 23J

\*29411 POLLED 04/11/2021 RED w/ WHITE MARKINGS

BW	WW	CE	BW	WW	YW	M	TM	CEM	ST
74		EPD 17	-1.9	32	53	26	42	9	14
		% 2	3	>95	95	25	85	10	70

SASKVALLEY YESTERDAY 116Y

S: COUNTRYSIDE CONROY 91C

RIVER RIDGE HAPPY 6Y

YY DOVER JAZZ 156X

D: DGL APHELO 39A

DG MS CHECK

A smooth polled, stout bull calf out of a consistent producer. 39A is a moderate framed, good milking cow that is worth building a herd around.



HH CONROY 23J



MATERNAL SISTER

## HH 26J

### HH Conroy 26J

M484866 POLLED 04/13/2021 RED

BW	WW	CE	BW	WW	YW	M	TM	CEM	ST
91	601	EPD 14	-0.5	38	61	26	44	8	16
		% 10	10	90	85	25	70	15	45

SASKVALLEY YESTERDAY 116Y

S: COUNTRYSIDE CONROY 91C

RIVER RIDGE HAPPY 6Y

YY GUS' DOUBLE 105U

D: YY BARONESS DELIAH 661D

YY COLFAX COUNTESS Y82S

Deep sided, smooth polled, cherry red, thick and very correct. This long bodied, wide topped, well muscled calf will sire calves that stand out in any pen. A real smooth mover too!



HH CONROY 26J

## HH 27J

### HH Miner 27J

M484864 POLLED 04/14/2021 RED w/ WHITE MARKINGS

BW	WW	CE	BW	WW	YW	M	TM	CEM	ST
76	640	EPD 21	-4.2	38	54	26	44	13	16
		% 1	1	90	95	20	70	1	45

GLENFORD MINER 68Y

S: HH MINER 10D

YY BARONESS IRENE 215Z

MURIDALE HERO 31Z

D: HH MOCHA 19B

MURIDALE MOCHA 33Z

\$BMI: 142.35 | TOP 2%

My pick of the bull calves. This calf has inherited his mother's deep heartgirth, easy fleshing and low maintenance style combined with his exceptional growth, long body and muscular hip from his daddy. His calm disposition makes him an ideal herdsire and show prospect! Lots of hair and eye appeal. He is a TANK. He has a really great future ahead of him.



HH MINER 27J



NO HALTER NEEDED!

# BULL CALVES & BRED HEIFER



**HH 35J**

**HH Conroy 35J**

M484860	POLLED	04/27/2021	ROAN							
<b>BW</b>	<b>WW</b>	<b>CE</b>	<b>BW</b>	<b>WW</b>	<b>YW</b>	<b>M</b>	<b>TM</b>	<b>CEM</b>	<b>ST</b>	
87	637	EPD 17	0.6	39	60	22	41	10	16	
		%	10	20	85	85	70	90	3	45

SASKVALLEY YESTERDAY 116Y  
**S: COUNTRYSIDE CONROY 91C**  
 RIVER RIDGE HAPPY 6Y  
 HHFS DREAM WEAVER  
**D: HH JASMINE 4Y**  
 MATLOCK JASMINE 20J

Smooth polled, long bodied, hairy and structurally sound. This bull calf is one of the stoutest, yet youngest bull calves in the pen. He has a unique pedigree with HHFS Dreamweaver as his maternal grandfather. He would make a great outcross for many purebred herds.



**HH 37J**

**HH Miner 37J**

M484868	POLLED	05/04/2021	RED							
<b>BW</b>	<b>WW</b>	<b>CE</b>	<b>BW</b>	<b>WW</b>	<b>YW</b>	<b>M</b>	<b>TM</b>	<b>CEM</b>	<b>ST</b>	
74	529	EPD 18	-3.1	40	58	23	43	10	15	
		%	1	1	80	90	60	80	3	60

GLENFORD MINER 68Y  
**S: HH MINER 10D**  
 YY BARONESS IRENE 215Z  
 BUTTERFIELD KRAKATOA  
**D: HH MOCHA 18F**  
 HH MOCHA 19B  
 \$BMI: 132.47 | TOP 10%

Just a May baby but solid red, hairy, correctly made. with just a 74 lbs birthweight he is heifer material. He has longevity in his pedigree. His maternal grandmother is 19B. This cow has both a bull calf and bred heifer in the sale. This little guy can, and will sire some great ones!



**HH 4H**

**HH Jasmine 4H**

F699401	POLLED	27/03/2020	RED							
<b>BW</b>	<b>WW</b>	<b>CE</b>	<b>BW</b>	<b>WW</b>	<b>YW</b>	<b>M</b>	<b>TM</b>	<b>CEM</b>	<b>ST</b>	
74	475	EPD 16	-1.7	41	62	24	45	10	14	
		%	3	3	80	80	45	65	3	70

GLENFORD MINER 68Y  
**S: HH MINER 10D**  
 YY BARONESS IRENE 215Z  
 COUNTRYSIDE CONROY 91C  
**D: HH JASMINE 31F**  
 HH JASMINE 8D

A deep rich red Miner heifer. This pedigree has major performance!



## HH 6H

### HH Susan 6H

\*27823 POLLED 03/31/2020 ROAN

BW	WW	CE	BW	WW	YW	M	TM	CEM	ST
90	498	EPD 10	2.1	48	72	25	49	6	17
		% 35	45	40	50	35	30	30	35

GLENFORD MINER 68Y

S: HH MINER 10D

YY BARONESS IRENE 215Z

MATLOCK WATCHMAN 79W

D: HH SUSAN 12Z

ELK SPRING SUSAN 104X



HH SUSAN 6H

A great grand daughter of Four Point Major! Purebred breeders, what an incredible genetic opportunity! This heifer's dam keeps on producing even though she is getting up in years. The Susan line milks very well, while still staying in great shape. They are sure footed in the toughest terrain and consistently bring in a calf every year. These are the type of cows that make commercial producers money!!! *Pasture exposed to Countryside Conroy 91C, June 20 - August 23, 2021*

## HH 11H

### HH Alectoris 11H

\*27845 POLLED 04/03/2020 ROAN

BW	WW	CE	BW	WW	YW	M	TM	CEM	ST
70	484	EPD 15	-1.1	50	70	27	52	8	17
		% 5	5	30	60	15	15	15	85

GLENFORD MINER 68Y

S: HH MINER 10D

YY BARONESS IRENE 215Z

YY ADAM 294A

D: HH ALECTORIS 9F

DGL ALECTORIS 40A



HH ALECTORIS 11H

The sleeper of this sale. This young Adam daughter is packed with performance, growth and good mothering ability. She may not look like it now, but she has the potential to be an extremely productive female! Her maternal granddam produces very stylish heifers and is currently in the flush pen.

*Pasture exposed to Countryside Conroy 91C, June 20 - August 23, 2021*

## HH 12

### COMMERCIAL H12

Shorthorn X Red Angus

BW	WW
80	-

GLENFORD MINER 68Y

S: HH MINER 10D

YY BARONESS IRENE 215Z

D: E27 (SHORTHORN X RED ANGUS)



COMMERCIAL - H12

This heifer shows what a little shorthorn in every commercial producer's herd can do. Shorthorns add growth, muscle, femininity, milk, good feet and legs and superior mothering ability. PLUS, she is a dark cherry red and is so nice look at! Wouldn't you want a bunch of 1/2 or 3/4 blood heifers like her?

*Pasture exposed to Countryside Conroy 91C, June 20 - August 23, 2021*

# BRED HEIFERS



HH 13H

HH Jasmine 13H

*27821	POLLED	04/04/2020	ROAN							
<b>BW</b>	<b>WW</b>	<b>CE</b>	<b>BW</b>	<b>WW</b>	<b>YW</b>	<b>M</b>	<b>TM</b>	<b>CEM</b>	<b>ST</b>	
90	525	EPD	6	4.4	55	82	23	50	5	18
		%	80	90	15	20	60	25	45	25

YY ADAM 294A

S: HH ADAM 8F

DGL ZENAIDA 35Z

HHFS DREAM WEAVER

D: HH JASMINE 4Y

MATLOCK JASMINE 20J

The only daughter of 4Y ( Jazz x Dreamweaver). What an opportunity for all you purebred breeders! This heifer is the product of many years of breeding great cows to great bulls. She combines femininity, muscle, growth and milk. Her mom is the type of cow you flush and build an entire herd around. Letting this one go took a lot of arm twisting!!! *Pasture exposed to Countryside Conroy 91C, June 20 - August 23, 2021*



HH 16H

HH Dream Cloud 16H

*27822	POLLED	06/04/2020	RED							
<b>BW</b>	<b>WW</b>	<b>CE</b>	<b>BW</b>	<b>WW</b>	<b>YW</b>	<b>M</b>	<b>TM</b>	<b>CEM</b>	<b>ST</b>	
90	539	EPD	7	3.5	48	74	28	52	4	16
		%	65	75	40	45	10	15	60	45

YY ADAM 294A

S: HH ADAM 8F

DGL ZENAIDA 35Z

MATLOCK CHANCE 9Y

D: HH DREAM CLOUD 5A

YY DREAM CLOUD 194Y

Is a deep sided, broody female just like her mom. The 5A cow milks really well and can really produce a calf that tips the scales in the fall year after year. This heifer is the spitting image of her dam.

*Pasture exposed to Countryside Conroy 91C, June 20 - August 23, 2021*



HH 20H

HH Mocha 20H

*27825	POLLED	04/10/2020	ROAN							
<b>BW</b>	<b>WW</b>	<b>CE</b>	<b>BW</b>	<b>WW</b>	<b>YW</b>	<b>M</b>	<b>TM</b>	<b>CEM</b>	<b>ST</b>	
80	489	EPD	16	-1.2	51	64	25	45	10	18
		%	3	5	80	75	35	65	3	25

YY ADAM 294A

S: HH ADAM 8F

DGL ZENAIDA 35Z

MURIDALE HERO 31Z

D: HH MOCHA 19B

MURIDALE MOCHA 33Z



Broody, easy fleshing, low maintenance, feminine and structurally sound. This heifer is a tank! Out of 19B, one of the most functional and productive cows in the herd. Her mother never misses. I wish all my heifers had her capacity.

*Pasture exposed to Countryside Conroy 91C, June 20 - August 23, 2021*

## HH 28H HH Zambesi Ruby 28H

\*27852 POLLED 04/19/2020 RED

BW	WW	CE	BW	WW	YW	M	TM	CEM	ST	
94	571	EPD 9	1.0	49	71	26	51	6	13	
		%	45	25	35	55	20	20	30	75

GLENFORD MINER 68Y

S: HH MINER 10D

YY BARONESS IRENE 215Z

WPS ZAMBESI 571

D: YY ZAMBESI RUBY 166X

YY BITTERROOT AUGUSTA RUBY DR7



HH ZAMBESI RUBY 28H

Muscle + milk + easy fleshing + stlye + structurally sound = BROOD COW!!!! This heifer has it all and then some. Out of a big red Y Lazy Y cow that produces keeper heifers everytime. Miner 10D has left some pretty amazing daughters. You can't help but drool when you see all his dark cherry red progeny standing in the field. The 3 Miner heifers in the sale are very powerful, just like their dad. Miner 10D has had the biggest impact on my herd in terms of getting the BEEF back in this breed. I would love the whole herd to be just like this. The Miner daughters are very hard to part with. *Pasture exposed to Countryside Conroy 91C, June 20 - August 23, 2021*

## HH 22H HH Fantasy 22H

\*27830 POLLED 04/14/2020 ROAN

BW	WW	CE	BW	WW	YW	M	TM	CEM	ST	
87	425	EPD 6	3.0	42	71	24	45	2	13	
		%	80	65	75	55	45	65	85	75

YY ADAM 294A

S: HH ADAM 8F

DGL ZENAIDA 35Z

LAKESIDE RIPPER 901

D: MATLOCK LSR FANTASY 78Z

MATLOCK IDEAL FANTASY 18U



HH FANTASY 22H

Another refined and stylish Adam heifer. Moderate framed and easy fleshing. This girls dam, 78Z is one of the quietest cows in the herd. As well, 78Z has performance stacked in her pedigree.

*Pasture exposed to Countryside Conroy 91C, June 20 - August 23, 2021*

## HH 24H HH Bitterroot Ruby 24H

\*27836 POLLED 04/15/2020 ROAN

BW	WW	CE	BW	WW	YW	M	TM	CEM	ST	
105	549	EPD 5	5.2	56	93	27	55	4	15	
		%	85	95	10	10	15	10	60	60

YY ADAM 294A

S: HH ADAM 8F

DGL ZENAIDA 35Z

COALPIT CREEK LEADER 6TH

D: YY BITTERROOT RUBY 410B

YY ZAMBESI RUBY 166X



HH BITTERROOT RUBY 24H

A very attractive heifer with growth and muscle. She is out of a deep sided, good milking and docile cow. The 410B cow is one of the top cows in the herd. I think so highly of this heifer's mom that I kept her 2021 bull calf for myself as my future herdsire. *Pasture exposed to Countryside Conroy 91C, June 20 - August 23, 2021*

# BRED HEIFERS



**HH**  
**H25H**

**HH** *Baroness Ruby 25H*

\*27835 POLLED 04/16/2020 ROAN

BW	WW	CE	BW	WW	YW	M	TM	CEM	ST
102	510	3	5.6	51	83	24	50	3	20
EPD									
%		>95	>95	25	20	45	25	75	10

YY ADAM 294A

S: HH ADAM 8F

DGL ZENAIDA 35Z

DIAMOND PROPHECY 21P

D: YY BARONESS RUBY 409B

YY COLFAX COUNTESS Y82S

Long bodied heifer with a feminine, clean front end. Her dam is a hard working, good milking cow.

*Pasture exposed to Countryside Conroy 91C, June 20 - August 23, 2021*



**HH**  
**H40H**

**HH** *Jasmine 40H*

F699640 POLLED 05/01/2020 ROAN

BW	WW	CE	BW	WW	YW	M	TM	CEM	ST
70	460	19	-2.7	24	40	23	35	12	16
EPD									
%		1	2	>95	>95	60	>95	1	45

SASKVALLEY YESTERDAY 116Y

S: COUNTRYSIDE CONROY 91C

RIVER RIDGE HAPPY 6Y

HH CHANCE 8B

D: HH JASMINE 13D

HH JASMINE 64X

The only Conroy daughter in the sale. With this heifer's pedigree, there is bound to be some growth and style to her calf. The Conroy heifers bred Miner have turned out to be great dams. In fact, 19J bull calf in this year's sale is a shining example. *Pasture exposed to HH Miner 10D, June 20 - August 20, 2021*

*\*All heifers were preg-checked September 19, 2021. All heifers are safe in calf.*



**Heather and her family would like to thank  
all of the bidders and buyers for their support**

## How to Participate in this DLMS Farm Gate Timed Auction with Extended Bidding :

**1.** Visit [www.dlms.ca](http://www.dlms.ca) and go to the sale you are interested in and then click the link to be directed to the DLMS FarmGate Timed site <https://farmgatetimedauctions.ca> , click the LOGIN/REGISTRATION button. First time users will select the REGISTER button from this page. Fill out the registration form to signup for a free user account and it allows you to select a username and password for use on all Farm Gate Timed auctions. This program will send you text and email messages whenever there is activity on your favorite lots or someone challenges your proxy bid and this is why you will be asked for both your current email and cell phone number. If you are a past participant in the Farm Gate Timed auctions simply enter your user name and password to continue. This takes you to a list of both current and upcoming Farm Gate Auctions.

**2.** You can choose your favorite lots in this sale at this time and the program will allow you to open either all sale lots or just your favorite lots on your screen. Any time there is active bidding on a lot you have identified on your favorite list you will get a text and/or an email noting this activity.

**3.** The program allows you to place a proxy bid on any sale lot. This in fact protects your interest in any lot of interest for you to a specified dollar value you set, when you may not be able to give 100% attention to the sale. If the lot has a \$2000 bid on it and you place a proxy bid of \$3500 into the system, the computer will bid \$2100 for you but if some one else bids \$2200, the computer will again bid for you, this time at \$2300. The system will look after your interest to a maximum of \$3500. If another bidder is on at \$3600, your proxy will no longer be effective and you will no longer have the winning bid on this lot without once again logging in and bidding again or moving your attention to a second lot of interest.

**4.** At Closing time of the sale the entire sale will extend bidding for 5 minute if a bid is placed on any lot in the sale. Any bid received after 6 PM will extend the sale by 5 minutes from the time of that bid. Wwhen no bidding occurs for 5 min the computer will declare the sale finished.

**5.** Within 24 hours of the sale close the Sale consignor will contact all winning bidders to arrange payment, transfer of pedigrees and delivery/Pick up of your lot. If you require assistance with using the new DLMS Farm Gate web site, if you don't understand how to create a favorites list, if you can't figure out the proxy bid or you just plain want to bid via phone, please talk to any of the DLMS team or Sale Consignors.

### More Info:

#### What is Racehorse Style Close?

Racehorse style sale close is when the entire sale stays open in extended bidding. This type of sale allows you as the bidder to change to a different lot within the same sale if the bidding has gone in to extended bidding.

#### How will Extended Bidding works?

When we get to the close out end time the clock for close extends with any bid placed with less than 5 min on the clock. This type of extended bidding turns the end time to more of a soft time. Extended bidding allows bidders to compete in lots like a real auction and give all bidders the same time to make a decision. Always follow the clock to see how much time remains in the sale you are interested in.

### 2021 CSA Shorthorn Non-Parent's Average EPD's

	CE	BW	WW	YW	M	TM	CEM	ST
EPD	9	2.4	46	72	24	47	5	16

# 2020 SALE HIGHLIGHTS



## HIGH SELLING BULL:

HH Conroy 5G to Melvin Heikel at Whispering Winds Farm for \$4,700

## VOLUME BUYER:

HDH 10G, HDH 20G & HDH 23G to Gerald Van Bruugen, Heritage Farms



## TERMS & CONDITIONS/OTHER DETAILS

### Terms:

Terms of the sale are cash or cheque, Cheques are to be made payable to Heather Haydock. The right of property shall not pass until after Heather has received payment in full for all sale cattle. All monies are in Canadian funds.

### Phone Bids:

If bidders are not used to the Farm gate format, please contact:  
Mark Shologan @ 780-699-5082  
They will be happy to assist you.

### TH Status:

All sale lots have been declared TH free by pedigree.

### Pedigrees:

No animals will be transferred until after payment has been received in full. Proper instruction must be provided at the conclusion of the sale.

### Insurance:

Stockmen's Insurance - Larry Toner (306-834-7652)

### Delivery:

Every assistance will be given in arranging the shipping and delivery of your purchases.  
Cattle will be delivered in the 2-3 weeks following the sale

***NO animals will be delivered or shipped until payment has been received in FULL***

### U.S Buyers:

~ A \$300/per lot will be assigned to your purchase. This will include all necessary vet inspections, health papers and delivery to Coutts AB. We will guarantee that your bull will be eligible to export to the USA or we will refund your purchase price. Purchases over \$5000 will have this fee waived.

### Weaning Weights:

Weaning Weights are adjusted 205 day weights.

# NOTES

---

---

---

---

---

---

---

---

---

---



**Heather Haydock**

Box 876  
Elk Point AB  
T0A 1A0



**RAISED ON COUNTRY**

*Shorthorn Bull & Female Sale*